

## Subject #3: Geography

**Project #38: Introduction to Google Earth** Introduce students to Google Earth, panning in and out, dragging with the mouse, changing the perspective of the earth's surface, visiting the solar system. Use classroom investigation into national symbols (White House, etc.) to spark their interest

Higher-order thinking skills	Technology-specific:	Subject Area/ Learning-specific	Standard: NETS-S
<i>Analyzing, evaluating</i>	<i>Adding graphic to KidPix, saving image in Google Earth,</i>	<i>Critical thinking, research, information fluency</i>	<i>3.a, 4.b</i>

Grade level: K-4

Prior knowledge: None

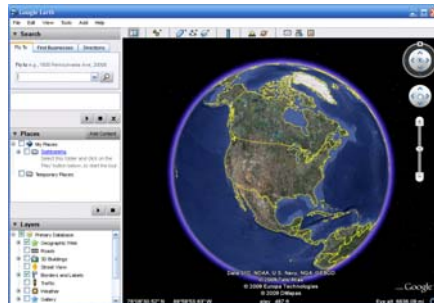
Time required: 30 minutes

Software required: Google Earth (free download from [www.earth.google.com](http://www.earth.google.com) )

Vocabulary: demo, tour, greeting, bathymetry, 3D,


### Lesson Description

- What is Google Earth? It is a virtual globe browser, drawing on thousands of Earth satellite pictures to present our world. It is used by hundreds of millions of people, thousands of which contribute to its wiki tools for uploading data and info.
- Google Earth is a hugely popular program with students as young as kindergarten



- Explain the mouse tools for GE:
  - Use mouse scroll to pan in, out
  - Click to stop panning.
  - Click and drag the scroll to change perspective.
  - Click and drag to move location
- Give students a list culled from classroom lessons and wonders of the world—or their suggestions. Have plenty of helpers for the younger students. Allow time to find the prescribed locations and explore the area. Encourage students to investigate what is around.

### Computer Activity

- Take a tour of Google Earth (tools—play tour—then push the arrow under 'places—sightseeing'). Tour the world; discover the power of Google Earth.
- Show student how to use the 'fly to' field  to designate a location.
- Type in, say 'Eiffel Tower' and push enter. Watch how GE flies around the world and pans into the location.

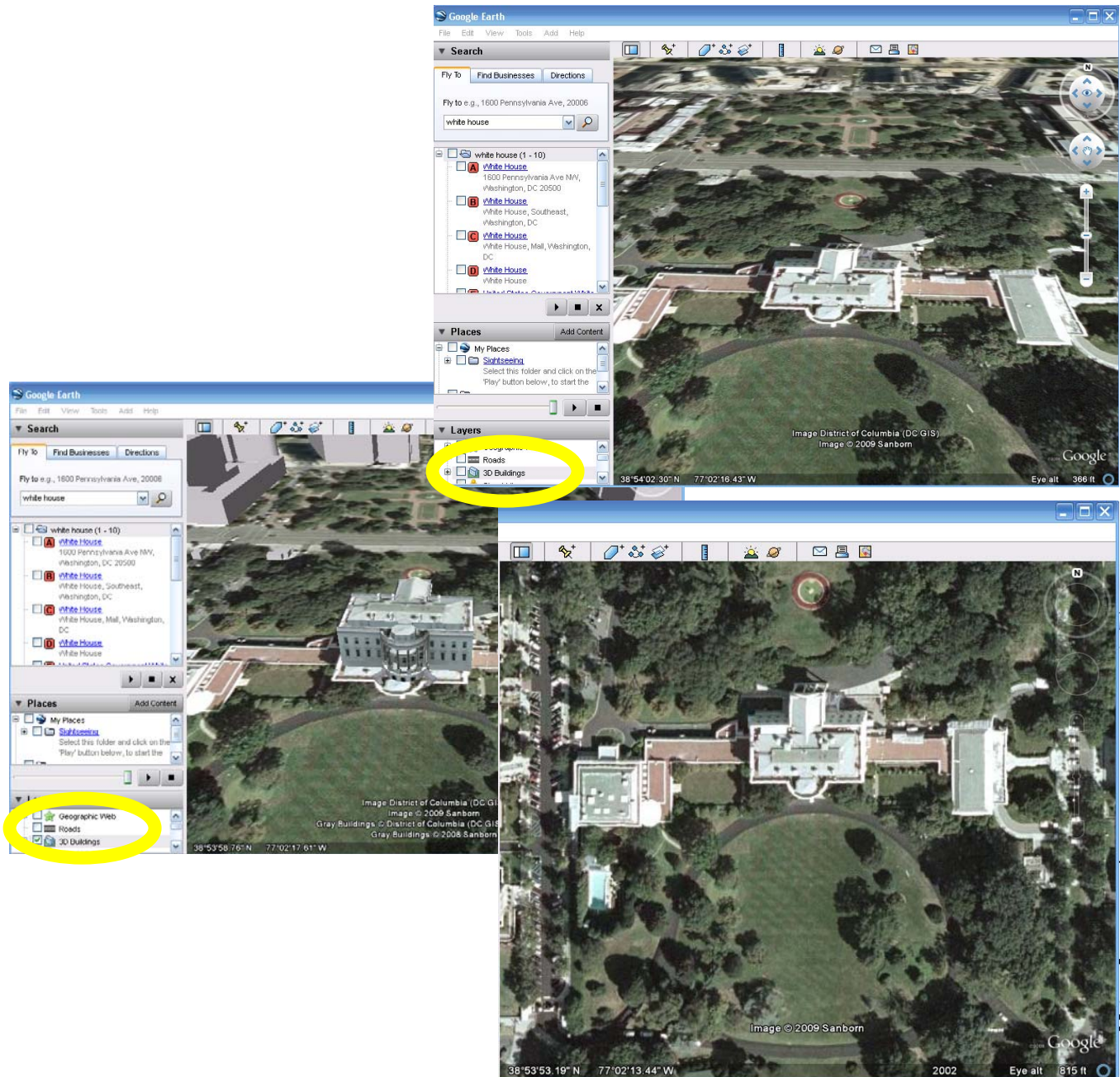
### Extensions

- Show them how to select '3D buildings' on the toolbar (under layers) and watch the buildings pop up into three dimensions.
- Try 'Street View' from the toolbar to see an eye-level view of the world
- Try 'Sky' to tour outer space
- Try 'Google Ocean' to cruise the 3D bathymetry of Earth's underwater world.

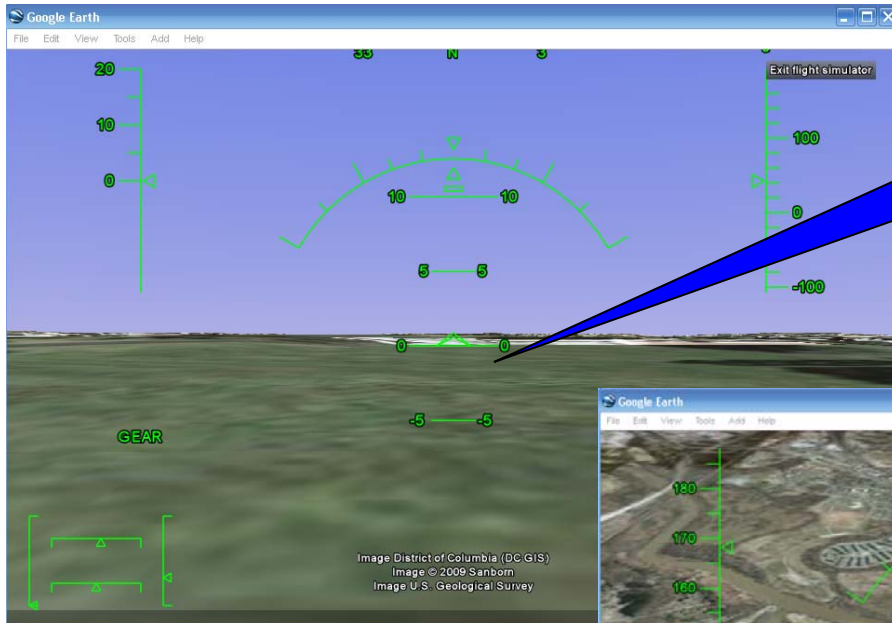
- Use 'flight simulator'—a free tool that allows students to fly around the world in an F16 or SR22. This is a favorite at my school.
- Add additional Google Earth skills for advanced learners (i.e., grids, measurements, marking locations)

### Troubleshooting Tips

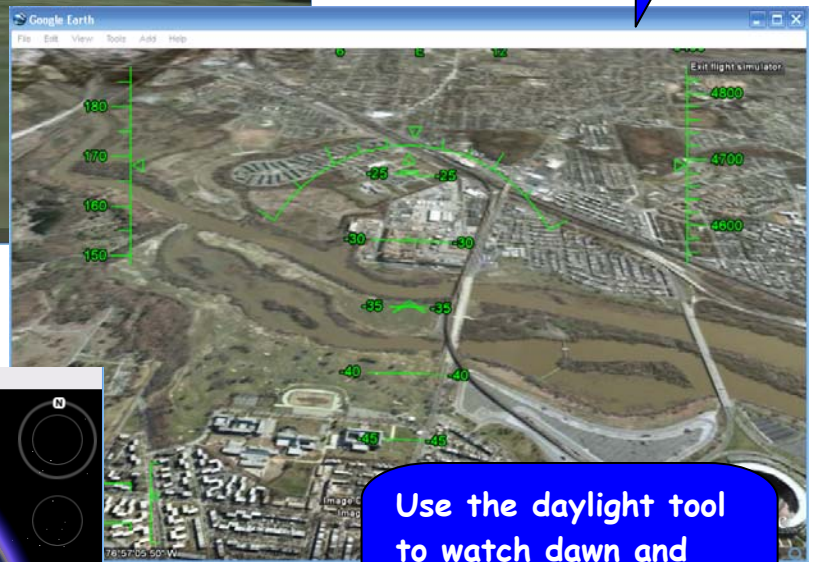
- *I type in a location and GE can't find it. (Add the city, state, country, or some combination of those. Or, go to 'Help—Google Earth Community' and find it there.)*



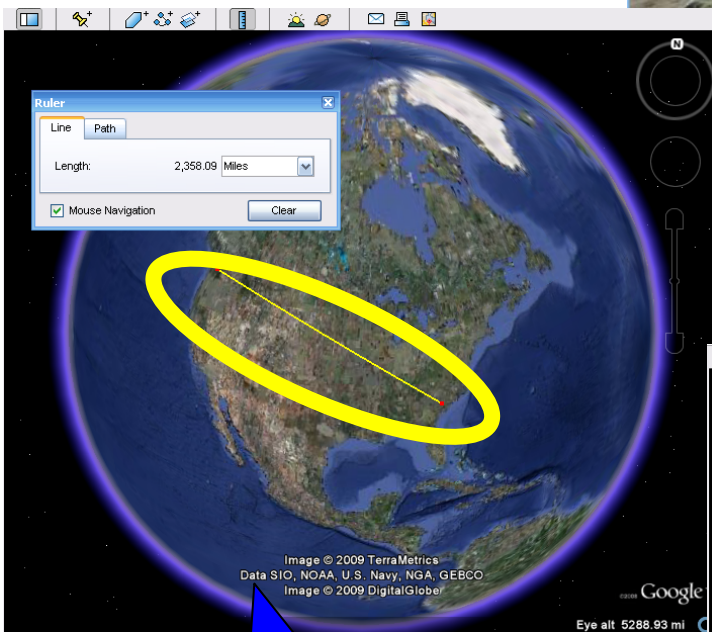




Use the ruler tool to find rough distances between points



Use the daylight tool to watch dawn and dusk move across the globe.



Use the ruler tool to find rough distances between points

